

KEY TO THE ORDERS OF INSECTS FOUND IN OR ON WATER

WINGS PRESENT AND WELL DEVELOPED,
ADULT INSECTS.

WINGS ABSENT OR REPRESENTED BY
WING BUDS ONLY.
NYMPHS, LARVAE, PRIMITIVE INSECTS

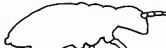
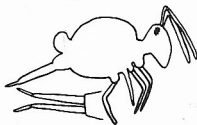
FRONT WINGS PRESENT AND MEMBRANOUS
AS IN A HOUSEFLY; HIND WINGS
ABSENT, REPRESENTED BY KNOBS.
DIPTERA (FLIES)

FRONT WINGS SHELL-LIKE
AND COVER ABOVEN. HAVE
A STRAIGHT SEAM DOWN MIDDLE
OF BACK.
COLEOPTERA (BEETLES)

FRONT WINGS LEATHERY, THE
TIPS OF WINGS OVER-LAP;
MOUTH IN FORM OF A BEAK.
HEMiptERA (TRUE BUGS)

SMALL INSECTS (1/8 INCH OR
LESS) WITH FORKED SPRINGS
UNDER REAR OF ABOVEN.
COLLEMBOLA (SPRINGTAILS)

WITHOUT SPRING AND
USUALLY LARGER

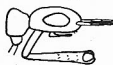


WING BUDS PRESENT ON THORAX
(EXCEPT IN VERY YOUNG SPECIMENS)
NYMPHS

MOUTH IN FORM OF A BEAK
HEMiptERA (TRUE BUGS)

MOUTH COVERED BY AN ELBOWED MASK
ODONATA (DRAGON AND DAMSELFLIES)

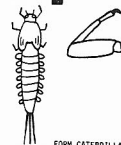
MOUTH NOT IN FORM OF A BEAK AND
NOT COVERED BY A MASK



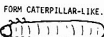
LEGS TERMINATE IN A SINGLE
CLAW, TAILS USUALLY THREE.
ABOVEN USUALLY WITH LATERAL
GILLS.
EMMENEROPTERA (MAYFLIES)

LEGS TERMINATE IN TWO CLAWS,
TAILS ALWAYS TWO, NO LATERAL
GILLS.
PLECOPTERA (STONEFLIES)

WING BUDS NOT PRESENT ON
THORAX
LARVAE



SIX LEGS PRESENT IN
THORACIC REGION



FORM CATERPILLAR-LIKE.

FORM NOT CATERPILLAR-LIKE.

THORACIC REGION WITHOUT
SIX LEGS; FORM VARIABLE
BUT OFTEN MAGGOT-LIKE.
DIPTERA (TRUE FLIES)

UNDERSIDE OF ABOVEN
WITH HOOKLETS ARRANGED
IN CIRCLES OR OVALS.
LEPIDOPTERA (MOTHS)

ABOVEN WITHOUT CIRCLES
OF HOOKLETS ON UNDERSIDE,
BUT WITH HOOKED CLAWS AT
END OF ABOVEN; OFTEN IN
A STONE OR LEAF CASE.
TRICHOPTERA (CADDISFLIES)

1/2 INCH IN TOTAL LENGTH OR
LESS, WITH NEEDLE-LIKE MOUTH
STYLETS (SISTRIOMES)
NEUROPTERA (SPONGILLA FLIES)

WITH LONG LATERAL
PROJECTIONS ON SIDES
OF ABOVEN.

ABOVEN WITH NEITHER
LATERAL FILAMENTS NOR
NEEDLE-LIKE MOUTHPARTS.
COLEOPTERA (BEETLES)



ABOVEN ENDS IN A SINGLE
LONG FILAMENT (SIALIOMES)
OR WITH TWO HOOKED CLAWS
(CORDYLIDOMES)
MEGALOPTERA (ALDERFLIES)

ABOVEN ENDS IN FOUR
CLAWS.
STRIOMES (BEETLES)

