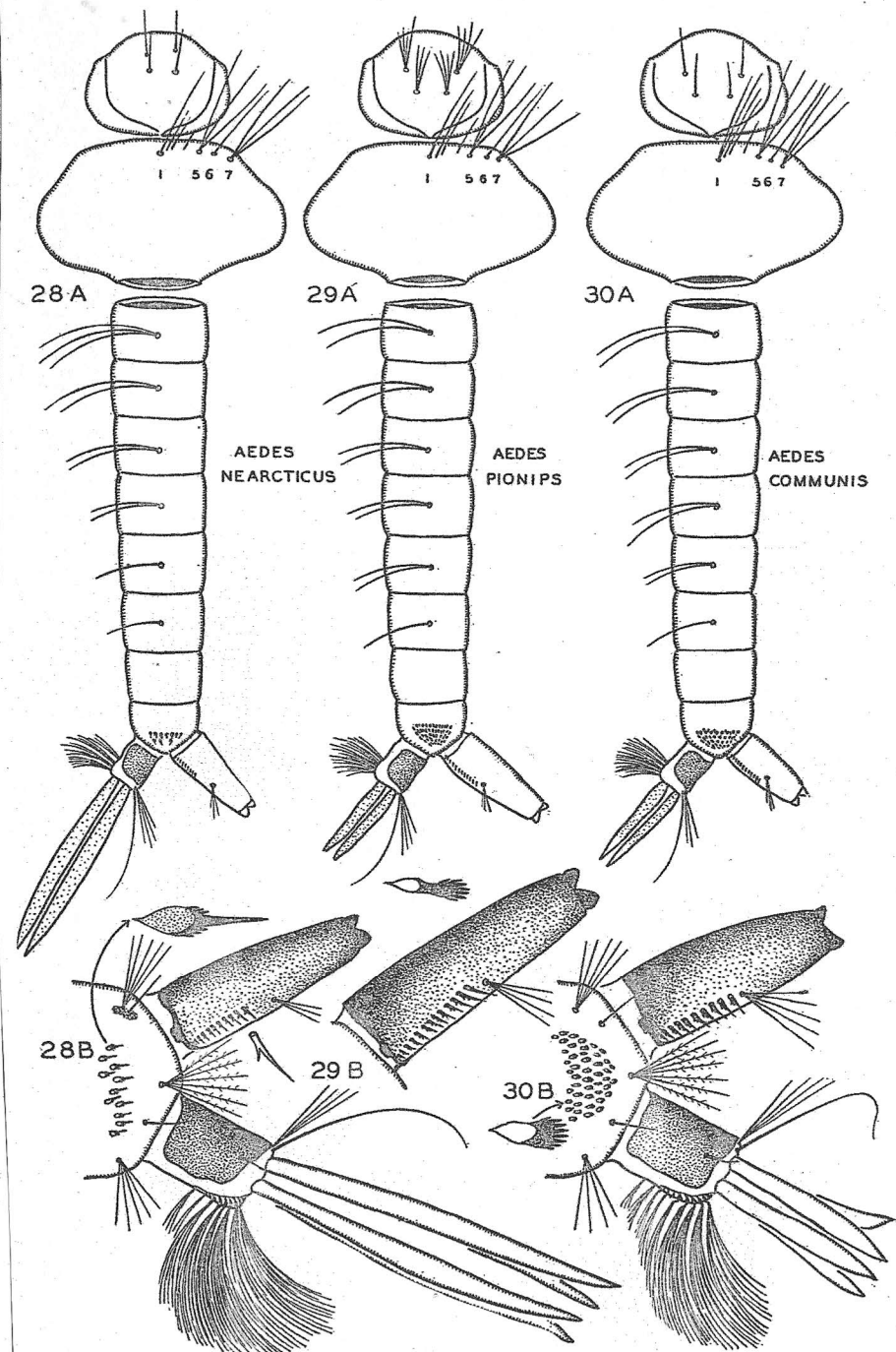


FIGS. 25-27. Larvae of *Aedes*. A, dorsum of head and thorax, lateral aspect of abdomen; B, terminal abdominal segments enlarged. Inset detail of antennae and comb scales. Fig. 26 redrawn from Dyar.



FIGS. 28-30. Larvae of *Aedes*. A, dorsum of head and thorax, lateral aspect of abdomen; B, terminal abdominal segments enlarged. Inset detail of comb scales.